

Essex Thameside News

Nº 175, November 2021



Contents

- 2. Chairman's message
- 3. Forthcoming shows and events
- 3. Quiz Answers
- 5. Peak Viewing
- 9. Car Quiz - Make and Model
- 12. At Home with Lester
- 15. Before They were Famous Quiz



Graham Cook
Chairman and co-editor

cook_gm@hotmail.co.uk

Chairman's message

Welcome to the November issue of Thameside News.

The unseasonal weather combined with the lingering restrictions imposed as a result of the pandemic created an inevitable late start to our summer show activities. Many of you, like myself, must feel that this summer seems to have disappeared before it has even started. And now, with the clocks going back, we are about to morph into winter.

Luckily, we live in an area that appears rife with small weekend gatherings of car enthusiasts. Take for example, North Weald Aerodrome where we attended a meeting on Sunday, 24th October. Initially somewhat cold and dull, it turned out bright, dry and sunny. It appears that a car gathering is being held at this venue most Sundays from around 09.30 to 12.30 hours. Fifteen of our region's members made the journey and all found the morning worthwhile – especially when you add in those delicious bacon rolls from the Red Bus.

Sadly, the Museum of Power has decided that they will not be holding any more monthly meetings until next year since the field will be too wet this time of year and that the concrete area is restricted due to a marque taking some of the space on the concrete. Oh, and don't forget, there is a Breakfast Meeting at the Castle on 6th November.

The Castle, Great Leighs, have confirmed that their last car meet of the year will be taking place on Saturday 6th November. Lets hope it is a sunny morning.

We have attended the Silverstone Classic as a club over recent years, which has been a great event to attend. We discussed at our last club night the idea that for a change maybe members might like to look at the Goodwood Revival which takes place over 3 days - 16th to 18th September. Several of our club have attended this event in the past, and Steve Rider at our November club night will give a short talk about the event and answer any questions members may have. Tickets for the event will be on sale



for one, two or three days and are available to Goodwood members first. I understand that the event is expected to be a sell out next year.



We look forward to seeing many of you at our next club night on Tuesday 2nd November.

I have had the pleasure of being your editor this month. We do have a couple of members who have short articles in the pipe-line for next newsletters, but now that the nights are drawing in, why not write something to keep our newsletter fresh and interesting. Don't be shy, any subject will be fine, it doesn't have to be about cars.

Graham

Other committee members



Neil Shanley
Committee member
and co-editor
neilshanley@btinternet.com



Gill Cain
Membership
secretary
jeccain451@outlook.com



Richard Gibby
Treasurer and Editor
rwgibby@gmail.com



Lester Magness
Events Coordinator
lestermagness1@gmail.com



Bob Cain
Committee member
jeccain451@outlook.com



Ian Croxson
Secretary
ian@thecroxsons.com

Forthcoming shows and events

The following shows and events are anticipated subject to COVID guidelines, including potential cancellation or postponement in the event of further COVID-related restrictions.

JEC Essex Thameside Region show attendances and events:

Tue 7 December Christmas Club Night, 8pm, Langdon Hills Country & Golf Club, RM14 3TY

Tue 4 January Club Night, 8pm, Langdon Hills Country & Golf Club, RM14 3TY

Tue 1 February Club Night, 8pm, Langdon Hills Country & Golf Club, RM14 3TY

Tue 1 March Club Night, 8pm, Langdon Hills Country & Golf Club, RM14 3TY

2022

Sun 12 June Bromley Pageant of Motoring

Sat-Sun 13-14 August JEC Festival North at Newby Hall

Sat-Sun 10- 11 September The Centenary of Jaguar -'Jags on the Prom' Blackpool.
Celebrating the centenary of The Shallow Side Car Company, SS Cars & Jaguar

For information—other non-JEC shows and events open to individuals:

Sat 6 November Breakfast Meet at The Castle, Great Leighs, CM3 1NE

Sundays 9:30-12:30 Car Meet at North Weald Airfield, CM16 6HR (most Sundays, not taking place 7th November)

Fri 12–Sun 14 November Lancaster Insurance Classic Motor Show at the NEC, Birmingham, B40 1NT

2022

Fri 26 – Sun 28 August The Silverstone Classic, Silverstone Circuit, Northants, NN12 8TN

Quiz Answers

Before They Were Famous

1 Orlando Bloom, 2 Sarah-Jessica Parker, 3 Johnny Cash, 4 Jimmy Page (Led Zeppelin)

5 Jeff Bridges, 6 Marilyn Monroe, 7 Patrick Swayze, 8 Meryl Streep, 9 George Harrison

10 Joan Collins, 11 Pamela Anderson, 12 Dean Martin

Car Quiz

1 Ice Cold in Alex - John Mills, Anthony Quayle, Harry Andrews, Silvia Simms, 2 Knight Rider - David Hasselhoff, 3 The Italian Job - Michael Caine

4 The Driver - Ryan O'Neal, Isabelle Adjani, 5 Raiders of the Lost Ark - Harrison Ford

6 Thunderbirds - David Graham, Silvia Anderson, 7 Where Eagles Dare - Clint Eastwood, Richard Burton, 8 Ronin - John Reno, Robert De Niro, 9 The Flintstones - Rick Moranis, John Goodman,

10 North By Northwest - Cary Grant, 11 Ferris Beuller's Day Off - Mia Sara, Alan Ruck, Matthew Broderick, 12 The French Connection - Roy Scheider, Gene Hackman, 13 Kelly's Heroes - Clint Eastwood, 14 The Saint - Roger Moore, 15 Batman - Burt Ward, Adam West, 16 Le Mans 66 - Matt Damon, Tracy Letts

CAR SERVICE FROM JUST £98
DON'T BE FOOLED BY MAIN DEALER CHEAP OFFERS!
01277 810840



NEW AND PART WORN TYRES AVAILABLE

COLLECTION & DELIVERY ANYWHERE IN UK CALL FOR QUOTE!

Guarantee on all parts and labour
Save up to 50% over main dealers
No work done without prior agreement

AJ Servicing and Repairs
BOOK YOUR SERVICE NOW
 01277 810840
 repairs@ajservicing.co.uk
 A127 Southend Arterial Road (London bound), Brentwood, Essex. CM19 9TA

CROWNLANDS GARAGE



FOR ALL YOUR MECHANICAL NEEDS
INC: MOT, SERVICING, TYRES,
DIAGNOSTIC & MORE...

ALL MECHANICAL WORK UNDERTAKEN



CROWNLANDS GARAGE
 01277 364545
 crownlands.garage@mail.com
 A414 Chelmsford Road, High Ongar, CM5 9NW

Free

Vauxhall Space Saver Wheel

Do you own a Vauxhall, and not have a Space Saver Wheel

The following is Offered Free, to anyone that can make use of it.

Spacer Saver Wheel with 115/70 R16 tyre, including foam / polystyrene insert, and jack etc.

It is thought to be from a Vauxhall, probably a Vectra. It may fit other makes, you would need to check the bolt pattern etc.

If you are interested please call

Steve Rider – 07969 572010





Peak Viewing

This tour to the Peak District was, as they say, a long time in the making. Initially organised and booked by Mary Monk in association with Scenic Car Tours for September 2020, we finally departed one year later as the Covid rules were sufficiently relaxed. Eleven couples and one single were originally booked, but unfortunately for health reasons, Mary and Geoff and Ray and Wanda were not able to join us. Helen Clark was also unable to take part. Luckily, their spaces were filled by other members eager to enjoy the trip.

The Peak District forms the Southern boundary of the Pennines and, despite its name, its landscape is more rounded hills, plateaux, valleys and gorges than sharp peaks. It is surrounded by the conurbations of Huddersfield, Sheffield, Derby, Stoke-On-Trent and Manchester. It contains a National Park which takes in Dark Peak and White Peak where many settlements, farms and limestone gorges can be found. For those who have never visited, there is a surprising number of places to see and activities to undertake.



Our base for the three night stay was the Makeney Hall Hotel, a former Victorian country mansion with 46 rooms and set in six acres



of landscaped gardens conveniently situated in Milford near Belper affording easy access to many of the area's notable destinations. Having checked in, our first destination was just a few hundred meters away – The Holly Bush Inn. This 17th Century establishment served an impressive array of local ales and home-made cooked lunches. I am told their locally produced pork pies are awesome. No wonder Dick Turpin used to call in from time to time.

Scenic Car Tours had listed a wide range of places to visit, but with only four days to hand, it was impossible to experience all as a group. However, by touring in smaller groups, many of the attractions were visited. The Heights of Abraham proved popular with some members. First



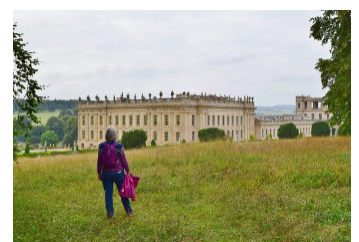
opened in 1780, this destination offered stunning views of the Derwent Valley. It now boasts a cable car, not previously available in the 18th Century, to transport you to the summit where from Tinker's Shaft you can see the mine shaft and a

vertical drop into The Masson Cavern. A little to the North lies the village of Eyan made famous when, in 1665, a local tailor ordered a box of material from London to make clothing for the villagers. By this act, he unwittingly

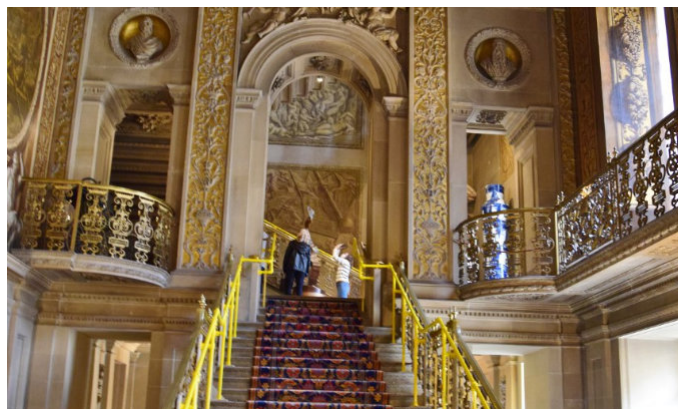
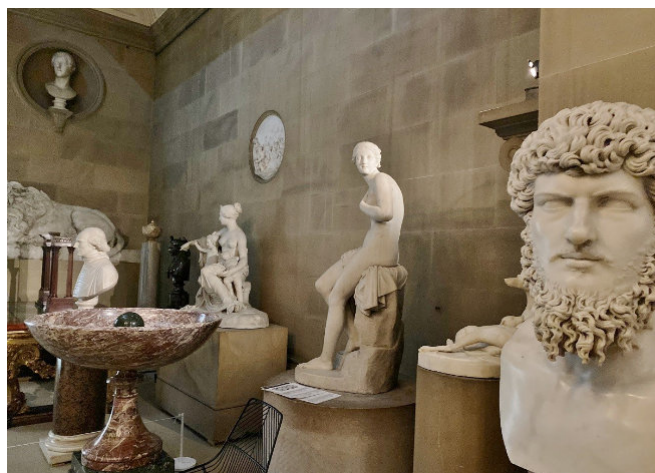
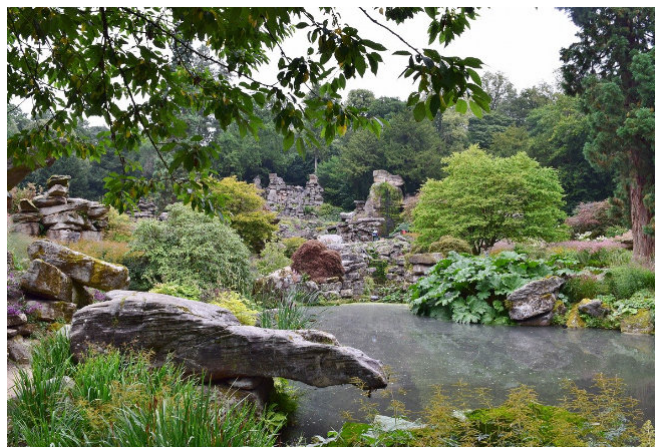
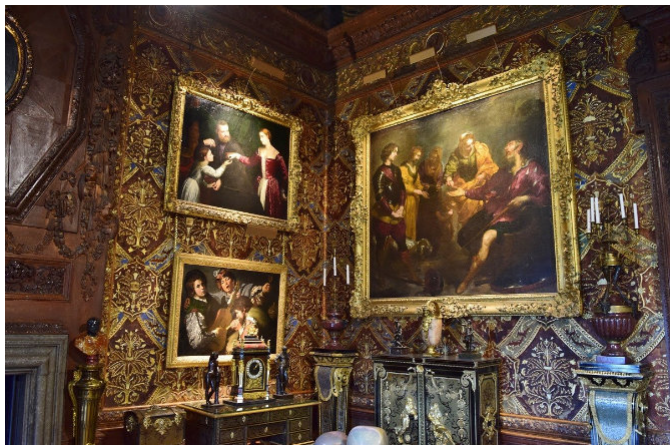


brought the bubonic plague, which was raging in London at the time, to this quiet village hundreds of miles away. The bacteria had infected the material and would spread through the local population. In a selfless decision, the inhabitants sealed off their village from the outside world in the hope that by doing this they would contain the disease. Two hundred and sixty died as a result, but the plague was stopped in its tracks.

We have long wished to visit Chatsworth House and this tour provided us with the perfect opportunity. The drive, around 30 miles, generally following the A6, took us through Belper and Matlock towards Bakewell and then on to our destination. Situated on the East bank of the River Derwent, Chatsworth House is the seat of the Duke of Devonshire and has been home to the Cavendish family since 1549 with the original Tudor mansion being built by Bess of Hardwick – wife of William Cavendish in the 1560's. The current house is seriously impressive, set in expansive parkland surrounded by wooded areas, rocky hills and moorland, it is of English Baroque and Italianate design and houses



collections of paintings, sculptures, furniture, books, old master drawings and much more. The grounds match the house for visual impact encompassing a huge rock garden – The Rockeries – worthy of a Flintstone movie, the Great Conservatory, The Cascade – a set of stone steps upon which a continuous stream of water flows down from the Baroque Temple above. Oh, and don't miss the spectacular Emperor Fountain. Allow a full day for your visit.



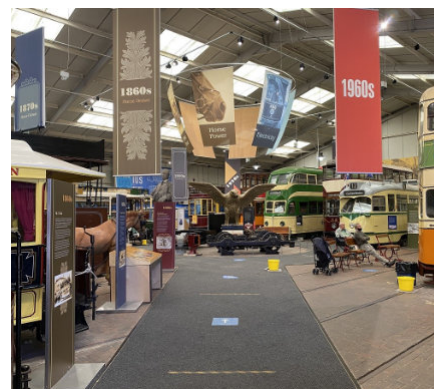
The Crich Tramway Village close to Matlock Bath, was popular with our group. Originally a limestone quarry which was purchased by George Stevenson, who built the nearby North Midland Railway, to take advantage of the rich coal field seams he found in Clay Cross, to produce burnt lime for agricultural use. To move the quarried limestone, he built a line to link the quarry with his North Midland Railway at Ambergate. The current tramway follows part of that line. The history of the museum dates back to the 1950's and 60's when most corporations and councils were scrapping their tram networks. A group of enthusiasts decided to buy and restore some surplus trams and eventually found the disused quarry to store and display them. The village evolved from this beginning. The collection contains more than 60 trams, some nearly 150 years old. They are

housed in purpose built sheds and run through a town setting complete with a pub, shops and a café. Many of the buildings are original and were transported stone by stone from their place of origin and re-erected in the village. With a mile of track, country walks and play areas, this is the place to go if you like trams or just want a day out.

There are many other places to visit including; Bakewell of pie and tart fame, Matlock Bath an early tourist destination, the spa town of Buxton, Castleton, numerous old mills and Peveril Castle to name but a few. Probably the smallest place Sue and I visited was Duffield Castle which we came across during a walk. It is basically a little pile of rocks set in a rectangular stone perimeter. It must be the National Trust's smallest property, but we are told that it would have had very good views in its heyday.

Finally, on the day of our departure, we visited one of the more recent attractions, The Great British Car Journey, a motor museum of over 100 carefully chosen cars charting the story of the British motor industry. Sited in old industrial buildings in Ambergate just a few miles from our hotel it is well worth visiting. More on this another time. Here's to the next trip!

Neil Shanley (with photographic help from Liz Croxson.)



SERVICING WITHOUT ANY HIDDEN DANGERS



SERVICING FROM £225 FOR VEHICLES OVER 3 YEARS OLD

A Jaguar service should never come with any unexpected surprises. That's why we only use Jaguar Trained Technicians and Jaguar Genuine Parts at a fixed and competitive price. Because when it comes to Jaguar servicing and maintenance, we believe our customers deserve nothing less than 100% Jaguar.

Grange Jaguar Brentwood

2 Brook Street, Brentwood, Essex CM145LU
01277249500

www.grange.brentwood.jaguar.co.uk

100% JAGUAR

SERVICING FOR VEHICLES OVER 3 YEARS OLD	✓
FIXED PRICE FROM £225	✓
JAGUAR TRAINED TECHNICIANS	✓
JAGUAR GENUINE PARTS	✓
2-YEAR PARTS WARRANTY	✓

THE ART OF PERFORMANCE

November Car Quiz - Name The Make And Model



Figure 1



Figure 2



Figure 3



Figure 4



Figure 5



Figure 6

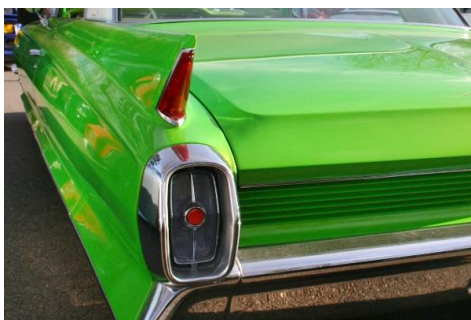


Figure 7



Figure 8



Figure 9



Figure 10



Figure 11



Figure 12



Figure 13



Figure 14



Figure 15



Figure 16

Good Luck. Answers in next month's Newsletter.



— CLASSIC & VINTAGE CAR CRAFTSMEN —

Family run restoration business with over 30 years' experience



Specialising in Jaguar, Bentley, Rolls Royce & Aston Martin

We offer a full, one stop shop for all aspects of maintenance & repair for your classic

Mechanical rebuilds, bespoke car upgrades & conversion, full engine & transmission rebuilds, body work/coachwork restoration, standard servicing, vehicle alignment, rust removal & repair, full body off restorations, performance & comfort upgrades, paint matching & application



TOLLESHUNT MAJOR, ESSEX

+44 (0)1621 869345 | info@ptclassics.co.uk | www.ptclassics.co.uk

At Home with Lester

Lester Magnus made our club the very kind offer for Sunday the 19th September of the use of his field, and a marquee that he had hired for a family function for the day before.

The event was all organised a few months back when no one really knew what restrictions we would be under with Covid19. Whilst the date for the afternoon tea meet was in September, and the weather can be colder and wetter, we had the great advantage of the comfort of a marquee. The committee decided that we would partly subsidise the events cost of the food, and tickets were priced at £10 per head.



Upon arrival we parked our fine Jaguars in front of the marquee, making a splendid sight. The weather forecast had been for showers on and off all day, but all morning it had remained dry. Upon arrival from 1pm, the sun was shining. We couldn't have asked for better weather.



To set the mood and get into the spirit of the event, upon arrival at Lester's, our caterers offered everyone a glass of Prosecco or Bucks Fizz. Following our entry into the marquee, we were greeted by

a large array of sandwiches including egg & cress, smoked



salmon & cream cheese, ham & mustard and cream cheese & cucumber- all of which to be eaten from bone china plates!

The caterers served us tea and coffees at the table, and brought around cake stands with a delicious selection of cakes, and the delight of lovely scones with jam and cream. The round tables in the marquee had linen table clothes. The vintage china certainly made the event a rather nice event to attend. The mood was further set as we were kindly entertained to a splendid music set by Hilary and Tracy.

Shortly after we had sat down the skies decided to open, and it poured down. It was actually rather pleasant being inside listening to the rain. The thought occurred to me, that if we were outside, we would all be sitting in our cars, wondering if we should sit it out or go home. We held a raffle, the proceeds will be split between two charities. Richard Turner, our on table, showed us a weather App he had on his phone. Amazingly the rain was only covering a narrow corridor, which of course was right over the top of Lester's field.



Fortunately, the weather didn't stop or spoil our fun afternoon. I was one of the last to leave. It was raining heavily as we left and just up the road, I realised the rain had totally flooded the road. It was an unlit road and it was too late to stop, I kept going and fortunately my XK8 came through unscathed. Half a mile further on the road was dry, and was dry all the way home. I thought what a blessing we had had the marquee. Once again, I would like to thank Lester on behalf of all the club members that attend the afternoon tea for the kind use of the marquee.

Graham Cook



XK8/XKR Enthusiasts Club (XKEC)

I'm aware, some members of the JEC Essex Thameside Region have more than one Jaguar and therefore belong to other Jaguar related clubs. For those owning Jaguar XK8s & Rs – X100 & X150 models – as well as F-Types, are you aware of the XKEC/F-Type Club? (www.thexkec.co.uk & www.f-typepec.co.uk)

Formed back in 2003 the XKEC is now celebrating its 18th anniversary, bringing together an international community of XK owners and enthusiasts from across 18 countries, making it the largest single model club of its kind that is dedicated solely to the X100 (1996-2006) and X150 (2006-2014) models of the Jaguar marque.

The Club continues to grow from strength to strength and is run by a loyal and dedicated team. It has Regional Officers, Model Register Coordinators and many other individuals who are all here to assist you as a member of our club. In addition to this website, members also have access to our members only forum and many other club benefits and offers.

For my sins, I have taken on the role of XKEC Regional Officer – Essex and have organised a number of breakfast meetings at The Hare & The Castle for members, as well as a recent visit to Woodham Mortimer. We have had 17 club members at all the events so far this year; there are around 45 members living in the Essex area. This club is

solely for owners of the XK8/R and F-Type owners who share my enthusiasm for the models. From 2022, I will be arranging various events and shows for the members of the Essex Region as well as participating in National events with the main club.

Check out the websites if you own one of these models and sign up.

Doug Warren

XKEC Essex Region Office



Tel: 01708 228150 or E-mail: info@essexjaguarspares.co.uk

www.essexjaguarspares.co.uk



ESSEX JAGUAR SPARES



INDEPENDENT JAGUAR SPECIALIST

FOR HIGH QUALITY SERVICING, REPAIRS AND THE SALE OF USED AND RE-CONDITIONED PARTS

JAGUARS WANTED:
ACCIDENT DAMAGED,
MOT FAILURES,
ABANDONED PROJECTS

ELECTRONIC FAULT DIAGNOSTICS
INCLUDING FAULT CODE READING,
WARNING LIGHTS EXTINGUISHED

K & H TRADING ESTATE,
ST MARYS LANE,
UPMINSTER,
ESSEX. RM14 3PA

BEFORE THEY WERE FAMOUS

Who did these youngsters grow up to be?

1



2



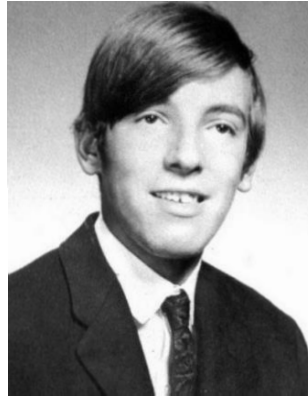
3



4



5



6



7



8



9



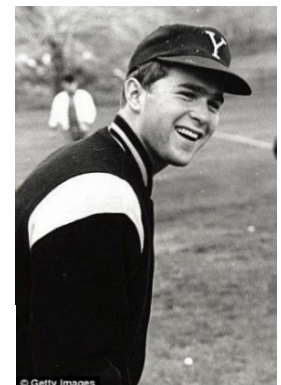
10



11



12



JAGUAR I-PACE

LEAD THE CHARGE WITH THE NEW ALL-ELECTRIC JAGUAR I-PACE



FROM JUST £579 PER MONTH ON 0% APR*

Combining performance, beauty and innovation, the new all-electric Jaguar I-PACE produces zero emissions and offers up to a 292-mile range on a single battery charge**. With Jaguar Personal Contract Purchase (PCP), it can be yours from £579 a month plus deposit and optional final payment.*

Now with a finance deposit allowance of up to £4,000 plus 0% APR Representative for a limited time only,* going electric has never been more compelling.

To find out more or book an extended test drive, contact us today.

Beadles Jaguar Southend

Cherry Orchard Way, Rochford, Essex, SS4 1GP
01702 808 080

www.group1auto.co.uk/jaguar

JAGUAR I-PACE SE EV400 (22MY)

Term	49 Months
48 Monthly Payments	£579.00
Customer Deposit	£9,767.00
Brand Deposit Contribution	£4,000.00
Total Deposit	£13,767.00
On the Road Price	£69,845.00
Amount of Credit	£56,078.00
Optional Final Payment	£27,116.00
Total Payable	£68,685.00
Total Payable by Customer	£64,685.00
OTP Fee	£10.00
Interest Rate (Fixed)	0.00%
APR Representative	0.00%
Annual Mileage	8,000 Miles
Excess Mileage	16.8 ppm (Incl. VAT)

*Representative Example relates to an I-PACE SE EV400. 0% APR Representative available on new Jaguar I-PACE models at participating Retailers only. With Jaguar Personal Contract Purchase (PCP) you have the option after you have paid all of the regular monthly repayments to: (1) Return the vehicle and not pay the Optional Final Repayment. In this example if the vehicle has exceeded the permitted maximum mileage of 40,833 miles, a charge of 16.8p (including VAT at 20%) will apply per excess mile. If the vehicle is in good condition (fair wear and tear accepted) and has not exceeded 40,833 miles you will have nothing further to pay. (2) Pay the Optional Final Repayment to own the vehicle or (3) Part exchange the vehicle subject to settlement of your existing finance agreement; new finance agreements are subject to status. Representative Example is based on an annual mileage of 10,000 miles. Credit is subject to status and is only available to UK residents aged 18 and over. This credit offer is only available through Black Horse Limited trading as Jaguar Financial Services, St William House, Tresillian Terrace, Cardiff CF10 5BH. Model shown may include optional features and may not be representative of the offer displayed.

**WLTP (Worldwide harmonised Light vehicle Test Procedure) is the new process that has been phased in from 2017, which measures fuel, energy consumption, range and emissions in passenger vehicles in Europe. This is designed to provide figures closer to real-world driving behaviour. It tests vehicles with optional equipment and with a more demanding test procedure and driving profile.