

JAGUAR ENTHUSIASTS' CLUB

sharing the passion

ESSEX THAMESIDE REGION

ISSUE 83 MARCH 2014



TEMPTING TIP BITS

Essex Police Music Festival - See Page 12

The Hare is coming back!! - Page 10



Life or Death of Jaguar - Page 5

Woburn and Southend Shows - Page 6

Jaguar's F Type Coupe is coming! It is due to be in the show rooms around the country by 20th March. - Page 8

Chairman's Message

Hi All,

From now on, a regular feature in the newsletter will be the launch dates of specific Jaguars through the ages, starting with 1948 - XK120 - through to 2013 - F Type convertible and the specific important events around the world in that year of manufacture. I hope you will find this as interesting as I have researching it.

Pages 3 - 4 of the newsletter relate to a new driving licence that will be issued on renewal from Feb. 2014. How many of you have checked your 'new style' driving licences recently? They are only valid for 10 years!!! No renewals are sent out, so it's up to the holders to check. Many people, including me, have almost been caught out, thinking they were lifetime licences. **Check yours now!**

There are quite a number of shows coming up this year, so you will have a choice. As a club, we are always looking for new venues to visit to make it more interesting for our members. One that I was hoping to report on this month, was the event at The Warren Golf Club in Woodham Walter nr. Maldon. Both Grange Motors and the Jaguar Drivers Club are keen to attend, as are we, but unfortunately, we are still awaiting to hear details of the event from the organiser. I do hope I will hear more by next month's newsletter. As I go to press, I am also waiting to hear from Jaguar World regarding the London to Brighton run. All I have been told is that it is due to be held on Sunday 27 April and they hope to begin at Greenwich, South East London. Will keep you all updated by e-mail.

Doug Warren Chairman



2013/2014 COMMITTEE

Doug Warren

Chairman & Editor

01245 261810

Mary Monk

Vice Chairman/

Secretary

01277 374030

Richard Gibby

Treasurer

rwgibby@gmail.com

Carrol Perryman

Membership Secretary

carrol1306@btinternet.com

Geoff Monk

Social Events Organiser

01277 374030

Ian Antrobus

Webmaster

01708 556620

Committee Members:

John Eusden & Neil Shanley.



*Club meetings are the 1st Tuesday of the month at 8pm: The Langdon Hills Golf & Country Club ,
Lower Dunton Road, Bulphan, Essex, RM14 3TY Tele: 01268 548444*



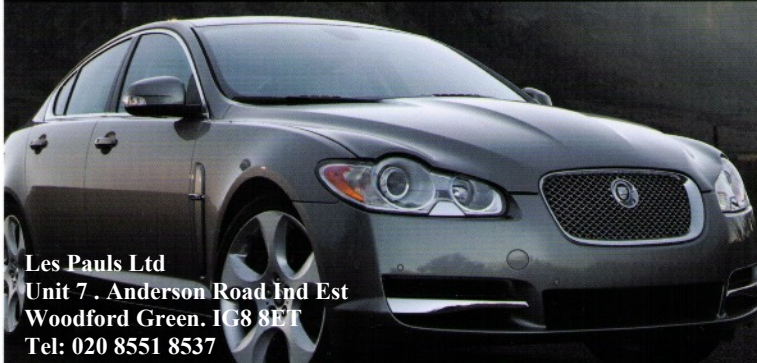
**SAVE UP TO 40%
AGAINST MAIN
DEALER CHARGES**

**WE WILL NOT BE
BEATEN ON PRICE -
CONTACT US FOR A QUOTE**



LES PAULS

**INDEPENDENT JAGUAR &
LAND ROVER SPECIALISTS**



Les Pauls Ltd
Unit 7 . Anderson Road Ind Est
Woodford Green. IG8 8ET
Tel: 020 8551 8537
E-mail: info@lespaulsmotors.co.uk



LES PAULS JAGUAR

The main dealer alternative where quality costs less

PAGE INDEX

Page 1: Chairman's Comments

Page 2: Committee

Page 3: New Driving Licence - Feb 2014

Page 4: New Driving Licence - Feb 2014

Page 5: Life or Death of Jaguar?

Page 6: Bedford & 'Breakfast at Tiffany's'?

Page 7: Events Timetables

Page 8: F-Type Coupe on display

Page 9: What happened in 1948?

Page 10: The Hare Breakfast Meets

Page 11: Sponsors Ads

Page 12: Essex Police Music Weekend

New UK Driving Licence information

The new cards:

- will be issued from Feb 2014
- are fully compliant with the European Union 3rd Directive.

Holders of valid cards:

- do not need to replace their current card.
- to receive the new style card upon renewal of their current card or if they need to replace their current card for any reason.

Driving Licence Card - front of card



Holographic feature

This feature contains a steering wheel, road and speedometer, in which the needle appears to move when the card is held along the short edges and tilted back and forth.

Raised lettering

Surname, category entitlement and date in the bottom left hand corner of the photo will contain raised lettering. This can be felt when a finger is run across the card and can be seen when viewed at an angle

Raised surface pattern

Raised tactile pattern and text positioned horizontally across the centre of the card and EU flag. It can be felt when a finger is run across the card and can be seen when viewed at an angle.

Optical Variable Ink (OVI) Feature

The wheel image illustrated on the right hand side of the card is produced with colour changing ink. The achieved effect is that the ink changes from green to gold when tilted on either axis.

Driving Licence Card - back of card



Changing images

Within the egg shaped lens in the lower left corner of the card, two different images will be seen when viewed at different angles. The images are of the card holder changing to the month and year of card expiry (e.g. MAR18).

Raised surface pattern

Raised tactile pattern positioned horizontally across the centre of the card.

Unique number (bottom right hand corner)

This number is a 10 digit alphanumeric character set and is unique to every card.

Raised Lettering

The number identifier for each field will be raised. This can be felt when a finger is run across the card and can be seen when viewed at an angle.

Tel: 01708 228150 or E-mail: info@essexjaguarspares.co.uk

www.essexjaguarspares.co.uk



ESSEX JAGUAR SPARES



THE JAGUAR SPECIALISTS

FOR HIGH QUALITY SERVICING, REPAIRS AND THE SALE OF USED AND RE-CONDITIONED PARTS

JAGUARS WANTED:
ACCIDENT DAMAGED,
MOT FAILURES,
ABANDONED PROJECTS

ELECTRONIC FAULT DIAGNOSTICS
INCLUDING FAULT CODE READING,
WARNING LIGHTS EXTINGUISHED

K & H TRADING ESTATE,
ST MARYS LANE,
UPMINSTER,
ESSEX. RM14 3PA



LIFE OR DEATH OF JAGUAR?

Jaguar plans to beat Audi, BMW and Mercedes-Benz at their own game by launching a new offensive which will result in four new models by 2018, says JLR's new strategy boss.

Adrian Hallmark promised that Jaguar would break out of its also-ran status in the global premium car market when it launches its new compact saloon in 2015, and will “build the most advanced, most efficient, most refined car in that segment. Not almost as good as, but better than the best in the world”.

He added: “It will look and drive like a Jaguar, be filled with the highest technology that anyone has ever brought to that segment, and have the most efficient engines and the most refined feel in its class.”

Codenamed X760, the new all-aluminium saloon will be joined by an estate and an SUV (smaller than the recently unveiled C-X17 concept). It's thought that there are also outline plans for a coupé variant and possibly a hatchback in the style of BMW's GT models.

According to a JLR executive quoted by automotive analysts in a recent Bernstein Research report, the new baby Jaguar project is the brand's last chance. “This is the only choice as Jaguar is not viable at 60,000 units [per year]. If the X760 fails, it will be probably be the end for the brand.”

However, all the signs are that the baby Jaguar project will not be a failure, especially as its financial viability will be propped up by the production of a new Range Rover Evoque XL, based on the same aluminium architecture as the Jaguar models. The Evoque XL will add much-needed volume and healthy profit margins.

The compact premium segment that Jaguar wants to break into is set to grow by another half a million sales by the end of the decade.

According to figures from London-based analyst ISI Auto, the global market for compact premium cars is currently dominated by the three German premium brands. Between them, the BMW 3-series family, Mercedes-Benz C-class and Audi A4 are expected to sell 1.15 million units next year, the majority of the total market segment sales of 1.3 million.

If Jaguar could steal just five per cent of sales, it would hit 80,000 units for the new saloon and estate. In the medium term, Jaguar could also launch a compact coupé, which could edge the road car family towards six-figure sales. Of course, X761, the Jaguar SUV — which, in production form, will be sized to compete with the BMW X3 — will add further volume.

The compact Jaguar could hardly be better prepared for breaking into the compact premium market. The only possible variable is the styling, but Jaguar design director Ian Callum and his team are pushing at an open door, considering the relative conservatism and familiarity of the current 3-series.

The 2001 X-type was based on a beefed-up version of the original Mondeo platform, but it also suffered conservative styling as well as a lack of diesel engines and, initially, alternative body styles.

However, this time Jaguar is coming at the compact premium market with a complete bespoke and freshly engineered car. It is surely Jaguar's best and last chance to become a true global player.

SUNDAY 4TH MAY 2014 (Bank Holiday Weekend)

17th BEDFORDSHIRE CLASSIC MOTOR SHOW

Woburn Abbey, Woburn, Beds, MK17 9WA

With over 400 classic and collectible vehicles taking part, the Bedfordshire Classic Car Show is not to be missed. Set in the beautiful surroundings of the Woburn Abbey Deer Park, there will be a number of static displays to see, as well as a show arena hosting stunning parades. Vehicles include saloons, sports, American, commercial, military and classic motorcycles. Make sure you visit the auto-jumble to find that perfect part. Commentary will be given by a top motoring journalist.

Trade and craft stands will be open throughout the weekend and a children's play area will provide entertainment for younger family members.

The Bedfordshire Classic Car show is open 10am – 5pm, with last admission at 4pm on both Saturday and Sunday. Bedfordshire Classic Car Show ticket holders will be able to receive discounted entry to Woburn Abbey and Gardens on the day of their visit.

Entry fee £3:50 *This is a new event for the club and I encourage all to consider this drive out into the country to visit this show.* Please contact Doug Warren for application form.



'BREAKFAST AT TIFFANY'S' SOUTHEND-ON-SEA

Residents and visitors may soon spot a collection of splendid vintage and classic cars on Southend seafront. These are being invited as part of a series of monthly classic vehicle breakfast events.

On the appointed days, up to 20 booked participants who bring their **beloved pre-1970 vehicles** to display in designated areas of City Beach, will each be entitled to a free breakfast in a seafront eateries - sponsored by the seafront traders.

These dates are: Sunday 30 March, Sunday 27 April, Sunday 25 May, Sunday 22 June and Sunday 28 September.

Members of the South Eastern Vintage and Classic Vehicle Club (SEVCVC) are taking part in the second date in the series - Sunday 27 April - which coincides with the National "Drive it Day" run by the Federation of British Historic Vehicle Clubs.

The annual event commemorates the 64 cars that left London on a 1,000 mile trial in April 1900, and encourages owners of classic vehicles to get them up and running and out on the road.

In addition, South Eastern Vintage and Classic Vehicle Club is staging its 21st anniversary London to Southend Classic Vehicle Run on Sunday 13 July.

If you are interested, please contact Roger Petheram, (JEC Essex Thameside Region member) a committee member of SEVCVC who is organising the London to Southend Vintage & Classic Car Run can be contacted at: rogp37@gmail.com for more details on all these events. **Please bear in mind, your vehicle must be pre-1970.**



REGIONAL EVENTS /OTHER EVENTS

MONTH	DAY	DATE	LOCATION
			2014
MAR	TUES	4th	Club night - Langdon Hills Golf & Country Club
APR	TUES	1st	Club night - Langdon Hills Golf & Country Club
MAY	SUN	4th	17th BEDFORDSHIRE CLASSIC MOTOR SHOW Woburn Abbey Woburn, Beds MK17 9WA Set in the beautiful 3,000 acre deer park. A truly splendid venue with something for all the family. Entry fee £3:50 Please contact Doug Warren for application form.
MAY	TUES	6th	A.G.M. & CLUB NIGHT Langdon Hills Golf & Country Club
MAY	SAT	10th	WARREN CLASSIC & CONCOURS d'ELEGANCE Details to follow in future newsletters.
MAY	SUN	11th	BATTLESBRIDGE CLASSIC CAR SHOW SORRY - FULL BOOKED
MAY	SUN	18th	FAVERSHAM TRANSPORT WEEKEND Classic vehicles craft stalls, food and drink among a host of other attractions. Entry by completing entry form and returning it to Doug Warren with a cheque for £4:50 (club discount)
MAY/ JUN	FRI	30th/2nd	LONG WEEKEND IN BRISTOL Incorporating a trip to the Hayes Museum to see the 'Red Room' and a fantastic display of classic cars through the ages . Contact Doug Warren for details.
JUN	SAT	14th	St. PETER'S CAR SHOW, Harold Wood, Essex. One we attended a year ago, which is again being held in 2014. Please register your interest directly using link below. You will need to let me know too, in order to plan the stand. http://www.stpeterscarshow.co.uk/booking
JUN	SAT/ SUN	14th/ 15th	AIR BRITIAN FLY-IN/ NORTH WEALD Details to follow in 2014
JULY	SUN	6th	THE MALDON MOTOR SHOW/CLASSICS ON THE PROM. More details nearer the time. Volunteer needed to organise, if we are to participate.

NATIONAL EVENTS

			2014
APR	SAT	12th	XF SEMINAR A seminar covering all aspects of XF ownership. Only £60 for members and £75 for non members. A full day including tea/coffee and a hearty lunch. Details at JEC http://www.jec.org.uk/club-services/seminars . Hotel Deal: The JEC have negotiated a great price at the Castle Bromwich Inn of £45.95 per night B&B and its right across from Jaguar. Call them on 0121 694 6700 and quote ref "Jag Club".
APR	SUN	27th	16th JAGUAR WORLD/JEC LONDON TO BRIGHTON RUN Indicated as the last annual gathering from London to Brighton.It is likely to be over subscribed so if you are interested, please book early. A great day will be had by all as previous events have shown. More details to follow nearer the time.

JAGUAR F-TYPE COUPE ON DISPLAY SUNDAY 16 FEB 2014.



On Sunday 16th February, Grange Motors were privileged to have a grey F-Type Coupe on display for a few hours. This was arranged through Jaguar who want to build the interest further in the F-Type Coupe. The car was transported down to the dealership on the back of a low-loader. It was a pre-production model, as the first of the dealer demo cars are not due until 20 March 2014. I am told that Grange have already sold 6 of these models prior to the owners actually seeing the car or at the very least tried them on the road! Should you consider purchasing one of these excellent cars, then it appears that it will be August or September before delivery can be obtained from Grange. The order books are filling up. *By the way, you can get the weekly shopping in this boot .*



Rowntrees launch the Polo Mint

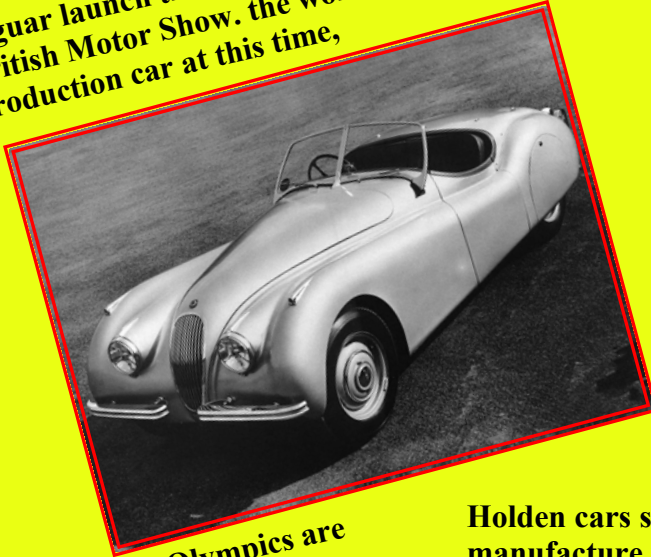


Charles Warrell
creates the first
I-Spy books.



1948

Jaguar launch the XK120 in October at the
British Motor Show. the world's fastest
production car at this time,



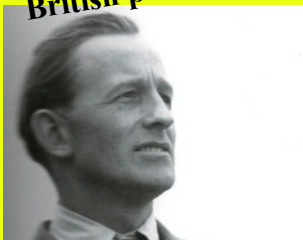
The Summer Olympics are
held in London, England



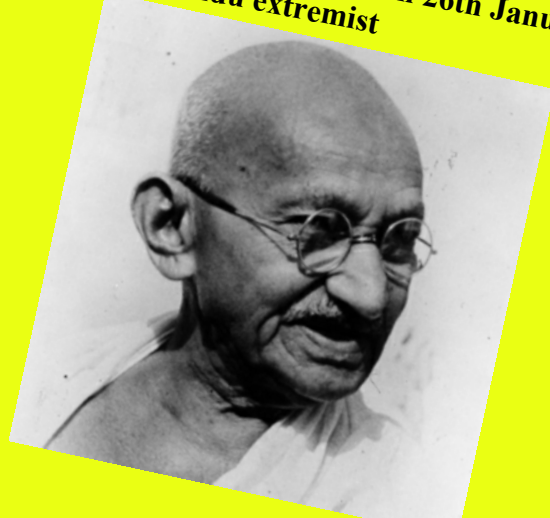
Jockey Lester Piggott, aged 12, wins
his first race, at Haydock Park



Flying the de Havilland DH 108,
John Derry becomes the first
British pilot to break the sound
barrier



Indian pacifist and leader Mahatma
Gandhi is murdered on 26th January
by a Hindu extremist



Holden cars starts
manufacture in
Australian



The NHS is created



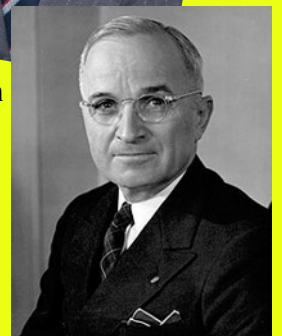
Prince Charles is born!



British Railways nationalised



Harry S. Truman
became the 33rd
President of the
United States of
America
(1945–1953).



IT'S GONNA BE HUGE!

Back for a 4th year!

The Hare Breakfast Club is back for the 2014 season!

The breakfast club is a monthly gathering of car enthusiasts from Essex and the surrounding counties. We gather on the first Saturday of the month from April to October. It doesn't matter what sort of car you drive but the more interesting the better! You just have to enjoy cars and hang out with like minded people.

With marques such as Porsche, Ferrari, Lamborghini, Jaguars and many more. Come and join us for the largest breakfast club in the South East.

We normally start gathering at 9am and customers are welcome to stay for lunch and enjoy a great selection of food and drinks from our varied menus.

Free filter coffee and Danish pastries will be provided by Pie & Pint Inns.

Full English breakfast and sandwiches can also be purchased from the bar.

Upcoming dates for the 2014 spring/summer season:

Saturday 5th April

Saturday 3rd May

Saturday 7th June

Saturday 5th July

Saturday 2nd August

Saturday 6th September

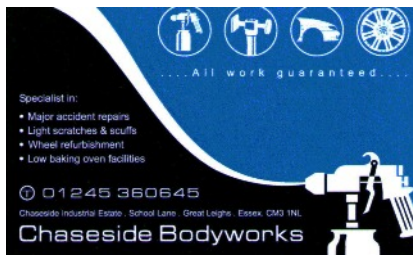
Saturday 4th October



The Hare, Bishops Stortford Road, Roxwell, Chelmsford, Essex, CM1 4LU

Telephone: 01245 248788

www.pieandpintinns.co.uk



*Specialist in: Major Accident repairs
Light Scratches & Scuffs Wheel
refurbishment from £40+ per wheel
(as featured in June 09 newsletter)
Low Baking Oven facilities*

*Chaseside Bodyworks
Chaseside Industrial Estate,
School Lane
Great Leighs
Essex
CM3 1NL
Call 01245 360645*

THE ONLY MAIN JAGUAR DEALER IN ESSEX

- New Vehicle Sales
- Approved Used Vehicle Sales
- Servicing – by Trained Technicians
- Genuine Jaguar Parts Dept.

GRANGE BRENTWOOD

2 Brook Street, Brentwood
CM14 5LU

01277 249 500

www.grangebrentwoodjaguar.co.uk



FOR ALL YOUR
*Jaguar servicing
& parts needs*



LOCAL | COMPETITIVE | PARTS
SKILLED JAGUAR TECHNICIANS
COLLECTION & DELIVERY
WHILE YOU WAIT SERVICE

0844 659 6191

Lookers
Customers for Life
JAGUAR SERVICE CENTRE,
CUTON HALL LANE, CHELMSFORD
ESSEX, CM2 5PX



essex autogroup RAYLEIGH JAGUAR APPROVED SERVICE CENTRE

- Jaguar Authorised Repairer
- Genuine Parts & Accessories
- Jaguar Trained Technicians
- Warranty Repairs
- Alloy Wheel & Body Repairs
- All Models Serviced & Maintained
- Value Servicing from £199*



CALL OUR JAGUAR HOTLINE:
01268 906296



essexautogroup.com/JAGUAR
Doing it even better for you

STADIUM WAY, RAYLEIGH, ESSEX, SS7 3NL

Terms & conditions apply. *For vehicles 3 years plus.





SATURDAY 19th JULY MUSIC FESTIVAL

Essex Police are organising a Music Festival on Saturday 19th July in aid of Essex Air Ambulance. Various police units including, but not limited to, the Marine Section, the Motorcycle Unit, Air Support Helicopter (hoping to have the helicopter land, subject to operational requirements), the Dog Section, Weapons Training, 4 x 4 display and WWII military vehicles, have been invited along to display their equipment and practices.

A special invite has gone out to JEC Essex Thameside Region too.

This event is not open to the General Public but to Essex Police Officers & Staff, family and friends. So those that are able to attend this event should feel privileged and special to be invited.

The details of the music at this event has yet to be indicated, but there are a number of police individuals that in their spare time play with a band and they will almost certainly be among the performing musicians.

Contact Doug Warren if you wish to attend.

