

JAGUAR

ESSEX THAMESIDE REGION



ISSUE NUMBER 58 | MARCH | 2012



CHAIRMAN'S MESSAGE

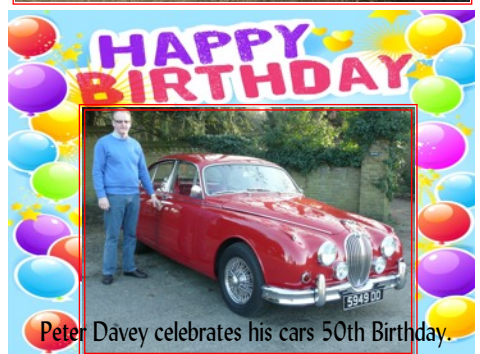
Hi All,
The Dinner Dance at the beginning of February was again a resounding success with the exception of the appalling weather which forecast snow at around 9pm that evening. Well done to all who came out that night with this threat in place. I would also like to thank Mary & Geoff for their sterling work in organising the event. I know it was hard work encouraging

members to participate in our annual event, but although the numbers were down from last year, I do hope that everyone that attended enjoyed the food, drink and company. *See pictures inside of the event.* At the end of January, I sent out an "Events Planner" for the year to all members with a stamped address return envelope included. I still have over 40 not returned. I would appreciate it if you can find the time to complete the form and return it in the stamped address envelope provided in order that we can ensure we have the numbers for the events planned for the year. Even if you are not attending any events, please could you strike it through and return it.

A meeting was held at Battlesbridge with Jim Gallie - the organiser - regarding our pitch at the show. We have secured a bigger new location with the prospects of having over 60 Jaguars on show from Essex Thameside, Essex & Suffolk Borders and Kent South. Provided we have the weather, we are going to have a good showing!

**Doug Warren -
Chairman**

■ Committee Members	Pg 2
■ Events	Pg 3
■ Events Calender	Pg 4
■ Dinner Dance	Pg 5
■ Sponsors	Pg 6



2011/12 Committee

The following Members have been elected/re-elected as your Committee for the forthcoming year,

Chairman/Editor Doug Warren
01245 261810

Vice Chairman/
Secretary: Mary Monk
01277 374030

Treasurer: Ann Beers
ann.beers@sky.com

Membership/
Secretary: Carrol & Steve Perryman
carrol1306@btinternet.com

Social Events
Organiser : Geoff Monk
01277 374030

Webmaster: Ian Antrobus
01708 556620



Committee Members:
John Eusden & Neil Shanley.

*Club meetings are the 1st Tuesday of the month at 8pm:
The Langdon Hills Golf & Country Club, Lower*

OBITUARY:

I wish to report on the sad death of Tony Milner who was a member of the Essex Thameside Region for over 15 years. He died 19th January 2012. Tony may be known to our long term members as he used to come to our Orsett Hall club meets. I understand he drove a TWR XJ-S & XK8. He will be sadly missed.

GP
JAGUAR
services
independent specialist

monday - friday: 9:30am - 5:30pm
saturday: 9:30am - 1:00pm
sunday: closed

314 lodge lane, collier row, romford
essex RM5 2HX



01708 728 638
07958 934 246

full workshop facilities
latest diagnostic equipment
servicing & repairs to all models
large selection of new & used parts

SAVE UP TO 40%
AGAINST MAIN
DEALER CHARGES

WE WILL NOT BE
BEATEN ON PRICE -
CONTACT US FOR A QUOTE



LES PAULS

INDEPENDENT JAGUAR &
LAND ROVER SPECIALISTS



LES PAULS JAGUAR

The main dealer alternative where quality costs less

AGM

Following a meeting of the Committee on Thursday 19th January 2012, it discussed the issue of the club accounts in line with the Annual General Meeting (AGM). As the AGM takes place in November, the accounts for the year, which currently runs from April to March, was always been out of date by eight months. Why we had our AGM in November wasn't known and it was agreed that we should move it to May so that the accounts would be ready and be more relevant. It was therefore decided to hold the next AGM in May 2013 rather than 2012 as the committee is already in place and making plans for the forthcoming year. The accounts will be noted at the May 2012 meeting.

EVENTS



Essex Thameside Region Annual Dinner Dance

The annual dinner dance fell on Saturday 4th February and was again a resounding success. It was a bit 'touch & go' as snow had been forecast all day. As it happened the weather turned at around 9pm with a deluge of snow which prompted members and friends to leave earlier than normal. The dinner itself was again very good consisting of Potato and Leek Soup, Roast Beef, Yorkshire Pudding and Apple Pie. The beef was thickly cut and was excellent. A disco was provided by the Golf Club and as always, members endeavoured to 'boogie the night away'. A number of members stayed over at the hotel on site and woke to the sight of snow everywhere. I can thoroughly recommend this annual event and look forward to its repeat next year.



WHITEWEBBS MUSEUM & SUNDAY LUNCH



The club has organised a visit to Whitewebbs Museum at Enfield on Sunday 25 March with a meal at The Plough at Cuffley following the visit. The museum has an event this day entitled "Rusty & Running" by Alan Noakes. There will be a number of exhibits on display inside and outside the museum. We intend to meet at Grange Motors at Brentwood at 12:00 midday then travel onto Enfield via M25. Payment for entry to the museum can be paid on the day. The Sunday meal at The Plough ranges from £5:25 to £9:25 depending on the size of the meal ordered - small, regular or kingsize!!!

The Plough - Cuffley



STOW MARIES AERODROME: A new event is being planned for Sunday 24th June. We are hoping to let you all know next month. This event is being planned with Jaguar Drivers Club - Area 33.

The requirement for an aerodrome at Stow Maries originated in the Government response to German Zeppelin airships and Gotha fixed-wing bomber attacks on the British mainland during the First World War. The first aircraft to arrive at the new aerodrome in September 1916 belonged to 'B' Flight, 37 (Home Defence) Squadron, Royal Flying Corps. The Squadron was charged with the eastern aerial defence of the capital. The Headquarters Flight moved into 'The Grange, Woodham Mortimer. 'A' Flight was dispatched to Rochford (now Southend Airport) and 'C' Flight to Gardeners Farm, Goldhanger. In the earliest part of its existence the accommodation consisted of wooden hutting and tents. The buildings now present on the airfield are later additions when the possibility still existed of the aerodrome being made permanent. The first commanding officer of Stow Maries Aerodrome was Lieutenant Claude Ridley. Educated at St Pauls School, London, he was barely 20 years of age but had already seen service with the Royal Flying Corps on the Western Front. Following a period of organisation and training at Stow Maries the first recorded operational flight took place from the aerodrome on the night of 23rd/24th May 1917 when Ridley (now promoted to Captain) and Lieutenant G Keddie were ordered aloft in response to a large Zeppelin raid targeting London. They scored no success on that occasion but as time went on the amount of operational flights grew as did the aircraft establishment of the station. Both day and night patrols are recorded but it was to be 'C' Flight at Goldhanger that claimed the Squadron's first confirmed destruction of an enemy machine, when during the early hours of 17th June 1917, 2nd Lieutenant L. P Watkins was credited with the downing of Zeppelin L48 at Theberton in Suffolk. This was to be the last Zeppelin brought down in Great Britain during the war. One of the station's busiest days was 7th July 1917 when aircraft were ordered after a formation of twenty two Gotha bombers heading for London. Stow Maries pilots engaged the enemy aircraft in a running fight and scored several hits. Fire was returned however and the ground crews found a number of bullet holes in the returning aircraft. In the summer of 1917 'A' Flight was posted from Rochford to Stow Maries effectively doubling the size of the station. At the same time the station's first commander Claude Ridley departed to form a new Squadron at Rochford. Day and night patrols continued but it was the fragility of the aircraft of the period and the inexperience of the young pilots that caused the loss of aircraft from the station. June 1917 saw the loss of 2nd Lieutenant Roy Mouritzen from Western Australia in a flying accident and July of the same year serious injury to Captain E Cotterill through engine failure. Captain B Quinan crashed at Woodham Walter on a training flight and was severely injured. He died in July 1918. 1918 saw continued losses at the aerodrome, Captain A Kynoch in an aerial collision at night, Lieutenant E Nicholls in another flying accident on the aerodrome and finally 2nd Lieutenant C Milburn in an accident near the edge of the flying field. Lieutenant Nicholls and 2nd Lieutenants Mouritzen and Milburn are buried in the churchyard of St Mary and St Margaret, Stow Maries, as is Stow's first commanding officer, Claude Ridley who died as a Wing Commander during the second World War, from natural causes. During the latter half of 1918 building continued and the aerodrome took on the familiar form it still holds today. The Headquarters Flight moved in from Woodham Mortimer and Stow Maries became a very busy place. An RAF survey at this time recorded 219 personnel and 16 aircraft. Completion of the aerodrome was scheduled for December 1918 but the war ended in November and some of the buildings were never completed. 'C' Flight moved to Stow Maries from Goldhanger in February 1919 bringing the total staffing levels to around 300 personnel and 24 aircraft, the first time the whole Squadron had been located at one Station. It signalled the end for the Essex aerodrome however and the following month the Squadron moved to Biggin Hill in Kent, leaving the site empty. The site returned to agriculture and only in 1940 did an RAF aircraft return to the airfield when a 242 Squadron Hurricane force landed with combat damage. The following years have seen the buildings used for both agriculture and accommodation. *They now find themselves subject of a sympathetic restoration project to restore the aerodrome to its former glory.*



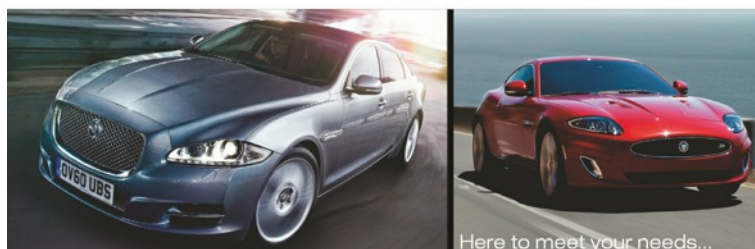
REGIONAL EVENTS /OTHER EVENTS			
MONTH	DAY	DATE	LOCATION
MAR	TUES	6th	Club Night at Langdon Hills Golf & Country Club @ 8pm
MAR	SUN	25th	Whitewebbs Transport Museum & Sunday Carvery Dinner. Admission to Museum £4 pp. Dinner to be confirmed. Special talk/demonstration by Alan Noakes "Rusty & Running". Meeting up at Grange Motors, Brentwood. 12.00 midday. Sunday lunch arranged at,
APR	TUES	3rd	Club Night at Langdon Hills Golf & Country Club @ 8pm
MAY	TUES	1st	Club Night at Langdon Hills Golf & Country Club @ 8pm
MAY	SUN	6th	Battlesbridge Classic Motor Show Classic Car Show and Autojumble Sunday 6th. May, 10-5pm £5 per car inc. driver and one passenger. All cheques/cash to Doug Warren by April 3rd Club Night.
MAY	SUN	19th/ 20th	Faversham "Travel Through Time" Weekend The famous Faversham Classic Car Show has been extended to a weekend-long event embracing all forms of historical vehicles and displays. As it increases in size and quality the transport weekend promises to continue as a firm favourite with locals and visitors alike. £5:00 per car. Contact Doug Warren 01245 261810.
JUN	TUES	12th	Club Night at Langdon Hills Golf & Country Club @ 8pm
JUN	SUN	3rd	HAMSTREET SHOW - KENT More details to follow nearer the time
JUN	SAT	16th	St. Peters Church Car Show Redden Court School, Cotswold Road, Harold Wood, Essex. RM3 0TS Admission free (donation appreciated in aid of the London Air Ambulance) 10am to 4pm (exhibitors expected between 07:30 - 09:30)
JUN	SUN	24th	STOW MARIES AERODROME BAR-B-QUE. Newly included & being set up currently in conjunction with Area 33 JDC. Details to follow. Contact Doug Warren 01245 261810/ dwarren169@btinternet.com See: www.stowmaries.com
JULY	SUN	15th	Essex County Car and Motorcycle Show. Crossing Temple. Details to follow nearer the time.
NATIONAL EVENTS			
MAR	SAT	10th	JEC Jaguar XK8/XKR (1996 to 2005 models) Seminar @ Castle Bromwich. This seminar is applicable to those looking to buy or already own these cars. This covers model development, buying, servicing, care and maintenance and more in depth body and mechanical issues, including parts supply and modifications. Go to JEC web site for application form; www.jec.org.uk/events.html
APR	SUN	22nd	LONDON TO BRIGHTON JAGUAR RUN In conjunction with JEC and Jaguar World Magazine. Details to follow nearer the time.
JUN	SAT - SUN	23rd & 24th	International Jaguar Weekend Weston Park, Shifnal, Shropshire JEC National Show. See www.jec.org.uk/events for further full details.



ADVERTISEMENTS



essex autogroup
Rayleigh Jaguar
Approved Service Centre



Here to meet your needs...

Jaguar Authorised Repairs
Jaguar Trained Technicians
Genuine Parts & Accessories
Warranty Repairs
All Models Serviced & Maintained



For all
enquiries call our
Jaguar Assistance Line



essexautogroup.com/jaguar
01268 906296
Doing it even better for you



**THE ONLY MAIN JAGUAR
DEALER IN ESSEX
ESTABLISHED 25 YEARS**

GRANGE BRENTWOOD

2 Brook Street,
Brentwood.

Tel: 01277 216 161



www.grange.brentwood.jaguar.co.uk

FOR ALL YOUR
*Jaguar servicing
& parts needs*



LOCAL | COMPETITIVE | PARTS
SKILLED JAGUAR TECHNICIANS
COLLECTION & DELIVERY
WHILE YOU WAIT SERVICE

01245 355553

Lookers formerly
DOVERCOURT

30 Robjohns Road, Widford Industrial
Estate, Chelmsford, Essex CM1 3AG

DOVERCOURTJAGUAR.COM



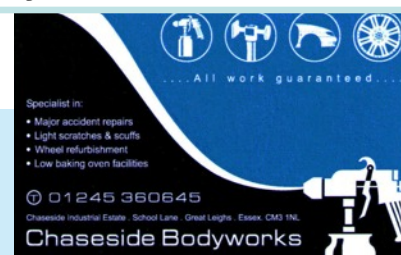
SPECIAL OFFER:

*Club members who are able to
show their membership cards
will be entitled to a 10%
discount on servicing and parts
from Grange Motors.*

Specialist in:
Major
Accident
repairs
Light

Scratches & Scuffs Wheel refurbishment
from £40+ per wheel (as featured in June
09 newsletter)
Low Baking Oven facilities

Chaseside Bodyworks
Chaseside Industrial Estate,
School Lane
Great Leighs
Essex
CM3 1NL
Call 01245 360645





The Soldiers, Sailors,
Airmen and families
Association-Forces Help

The National charity
helping serving and ex—
Service men, women and
their families in need



**16th
Annual
Charity
Golf
Event**



**WED
2nd
MAY
2012**

Lets try something else Mr. Sponswick,
the HOLDING THE BREATH trick's
not working

**Singles and Teams of Four Competitions
Raffle**

**Silent Auction for Golf Passes
COST £40.00 PER PERSON**

**The cost includes: green fees, coffee/tea & bacon roll
On arrival, a rolling buffet following the golf which
will generate many prizes!**

**For application forms and full details please apply to
Nigel Lampard, 26 Fairleigh Drive, Leigh-on-Sea,
Essex. SS9 2JA tel 01702 719364 or e-mail:
thelampards@tiscali.co.uk**

PIE & PINT
INNS



IT'S GONNA BE HUGE!

The Hare Breakfast Club is back for the 2012 season!

The Hare at Roxwell



The breakfast club is a monthly gathering of car enthusiasts from Essex and the surrounding counties. We gather on the first Saturday of each month from April to October, It doesn't matter what sort of car you drive but the more interesting the better! You just have to enjoy cars and hang out with other people that have the same addiction!

With Marques such as Porsche, Ferrari, Lamborghini and many more and maybe a surprise visit from the *Golden Crust* sponsored Porsche GT3 Cup race car. Come and join us for the largest breakfast club in the South East!

We normally start gathering at 9am and customers are welcome to stay for lunch and enjoy a great selection of food and drinks from our varied menus.

Free filter coffee and Danish pastries will be provided by Pie & Pint Inns.

Full English breakfast and sandwiches can also be purchased from the bar.

Upcoming dates for the 2012 spring/summer season:

Saturday 7th April

Saturday 5th May

Saturday 2nd June

Saturday 7th July

Saturday 4th August

Saturday 1st September

Saturday 6th October

The Hare, Bishops Stortford Road, Roxwell, Chelmsford, Essex, CM1 4LU

Telephone: 01245 248788

www.pieandpintinns.co.uk