

JAGUAR

ESSEX THAMESIDE REGION



ISSUE NUMBER 57 | JANUARY | 2012



CHAIRMAN'S MESSAGE

Here we are approaching 2012, with a new front cover of the newsletter for the new year. Hope you like it.

The committee are looking at events and speakers for 2012, so again I ask if any members have any suggestions for the club to attend or speakers that they would like to invite, please let me or other committee members know as soon as possible. It has been brought to my attention that some of our

'money boxes' that were held by Colin and Helen Field hadn't been emptied, so I have asked Ann Beers, who is now our Treasurer, to arrange for what monies that were in the containers to be put to some good use and she has donated the proceeds to Fairhavens Hospice, which they were very appreciative of.

With Christmas presents opened, there may be one or two of you that have received presents that perhaps may well end up in a cupboard or drawer. Why not bring it along to the January Club Night on Tuesday 3rd and donate it as a prize for our monthly raffle!! You never know, if you have a winning ticket, *you may well get it back!!!!* Finally, we had a quiz night at our December club night, with bottles of Bucks Fizz as prizes. There were table of eight - expecting to hand out a bottle per couple. Not So! The winning team were a table of individual men and they won! Had to go out and get more Bucks Fizz! I know what to do next time!!!! Hope those that attended enjoyed it and we will do it again soon.

Hope see you all at the January Club Night.

Doug Warren - Chairman

■ Committee Members Pg 2

■ Current News Pg 3

■ Events Pg 4

■ Current News Pg 5

■ Sponsors Pg 6



2011/12 Committee

The following Members have been elected/re-elected as your Committee for the forthcoming year,

Chairman/Editor Doug Warren
01245 261810

Vice Chairman/
Secretary: Mary Monk
01277 374030

Treasurer: Ann Beers
ann.beers@sky.com

Membership/
Secretary: Carrol & Steve Perryman
carrol1306@btinternet.com

Social Events
Organiser : Geoff Monk
01277 374030

Webmaster: Ian Antrobus
01708 556620



Photo
To
Follow.



Committee Members:
John Eusden & Neil Shanley.

*Club meetings are the 1st Tuesday of the month at 8pm:
The Langdon Hills Golf & Country Club, Lower*

FINAL CALL FOR ESSEX THAMESIDE REGION DINNER DANCE.

If you are going to the Dinner Dance on 4th February 2012, Geoff & Mary require payment by 3rd January please. Don't miss out. This is going to be an enjoyable evening.



01708 728 638
07958 934 246

monday - friday: 9:30am - 5:30pm
saturday: 9:30am - 1:00pm
sunday: closed

314 lodge lane, collier row, romford
essex RM5 2HX

full workshop facilities
latest diagnostic equipment
servicing & repairs to all models
large selection of new & used parts

SAVE UP TO 40%
AGAINST MAIN
DEALER CHARGES

WE WILL NOT BE
BEATEN ON PRICE -
CONTACT US FOR A QUOTE



LES PAULS

INDEPENDENT JAGUAR &
LAND ROVER SPECIALISTS



LES PAULS JAGUAR

The main dealer alternative where quality costs less

ANNUAL DINNER DANCE 2012

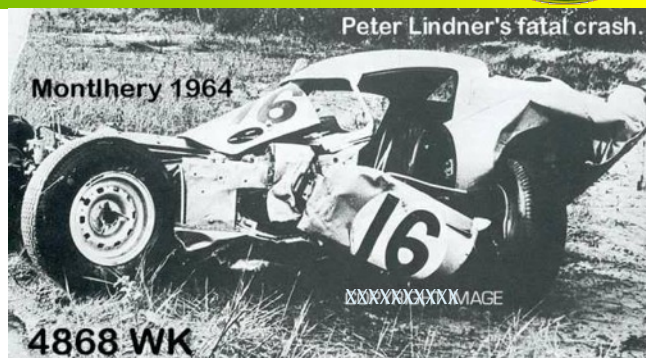
This is just a reminder that the annual dinner dance is being arranged for Saturday 4th February. If you want to stay over at the hotel you will need to make a booking with them directly. Prices currently are between £67 for a deluxe room to £89 for a Suite. If you wish to book rooms then please call 01268 548444 or email; info@golflangdon.co.uk.



4868 WK

Factory prepared low-drag lightweight E-Type

2011 is the year of the E-type so, following a 7,000-hour restoration, the unveiling by Classic Motor Cars on 5 May of the unique 'Lindner Nocker' lightweight E-type registered 4868 WK – the only factory produced low-drag lightweight – was timely. Originally prepared for Peter Lindner, Jaguar's dynamic German distributor, to compete at Le Mans and other major continental races, it was the last car built by the fabled Competitions Department at Browns Lane and identifiable by its unique roofline. Already a rare car (Jaguar built only 12 lightweights in total) 4868 WK achieved notoriety as a result of the terrible crash at Montlhéry in October 1964 which cost the lives of Peter Lindner, the young Italian driver Franco Patria and three marshals, after which it was impounded for a decade by the French authorities. When the legal dust had settled, the wrecked Jaguar was purchased by a young French enthusiast before changing hands a couple of times for ever increasing sums of money and landing in 1976 at Lynx Engineering. Here 4868 WK was rebuilt, but as its aluminium body was judged beyond salvation, a new but original Jaguar lightweight body was fitted. It never raced again and for 20 years it resided together with the crumpled remains of the original shell in the Rosso Bianco collection, until well known Jaguar restorer Peter Neumark of CMC acquired it and undertook the brave task of reuniting the crashed but essentially complete body with its original mechanicals.



After almost four years, including over 5,000 man-hours to restore the coachwork alone, Peter Neumark claims he has "lost count" of what this ambitious project has cost, but there can be little doubt that 4868 WK must now qualify as one of the most valuable E-types in the world.

Amongst the guests at the unveiling were Patrick Lansard, whose persistence led to the removal of the wreck of 4868 WK from Montlhéry, thus starting the long process of rehabilitation, and Tomas Fritz, nephew of Peter Lindner. Tomas has spent over 20 years rebuilding the reputation of Peter Lindner's company which, after his death, had all but gone by 1974. The resurrection of 4868 WK in which Tomas has been vital contributor of historical detail, was a very emotional moment.

Two former Jaguar Competitions Department employees, also contributors to this restoration, were at Bridgnorth: Peter Wilson, whose book, *Cat out of the Bag*, recounts the history of Jaguar's racing division in the 1960s, and the incomparable Norman Dewis. Jaguar's test driver extraordinaire recalled how he and aerodynamicist Malcolm Sayer would cut up a skein of wool into 4in strips, and tape them to 4868 WK's bodywork. Dewis would lap the MIRA test track at 100mph while he and Sayer observed exactly how and in which direction the wool would curl! Those were the days!!! I was fortunate to see the re-built car at Castle Bromwich at the AGM of the National Club on Saturday 26 November.

TIPS ON PUMPING PETROL

I don't know what you guys are paying for petrol.... I am paying up to £1.35 to £1.50 per litre. My line of work is in petroleum for about 31 years now, so here are some tricks to get more of your money's worth for every Litre:

Here at the Shell Pipeline where I work, we deliver about 4 million litres in a 24-hour period. One day is diesel the next day is jet fuel, and petrol, regular and premium grades. We have 34-storage tanks here with a total capacity of 16,800,000 Litres.

Only buy or fill up your car or truck in the early morning when the ground temperature is still cold. Remember that all service stations have their storage tanks buried below ground. The colder the ground the more dense the petrol, when it gets warmer petrol expands, so buying in the afternoon or in the evening, your litre is not exactly a litre. In the petroleum business, the specific gravity and the temperature of the petrol, diesel and jet fuel, ethanol and other petroleum products plays an important role.

A 1° rise in temperature is a big deal for this business. But the service stations do not have temperature compensation at the pumps.

When you're filling up do not squeeze the trigger of the nozzle to a fast mode If you look you will see that the trigger has three (3) stages: low, middle, and high. You should be pumping on low mode, thereby minimizing the vapours that are created while you are pumping. All hoses at the pump have a vapour return. If you are pumping on the fast rate, some of the liquid that goes to your tank becomes vapour. Those vapours are being sucked up and back into the underground storage tank so you're getting less worth for your money.

One of the most important tips is to fill up when your Petrol tank is HALF FULL. The reason for this is the more Petrol you have in your tank the less air occupying its empty space. petrol evaporates faster than you can imagine. petrol storage tanks have an internal floating roof. This roof serves as zero clearance between the Petrol and the atmosphere, so it minimizes the evaporation. Unlike service stations, here where I work, every truck that we load is temperature compensated so that every litre is actually the exact amount.

Another reminder, if there is a petrol truck pumping into the storage tanks when you stop to buy Petrol, DO NOT fill up: most likely the petrol is being stirred up as the Petrol is being delivered, and you might pick up some of the dirt that normally settles on the bottom.

E-mail to Chairman



REGIONAL EVENTS /OTHER EVENTS			
MONTH	DAY	DATE	LOCATION
JAN	TUES	3rd	CLUB NIGHT @ Langdon Hills Golf & Country Club @ 8pm
HOLD THIS DATE !!!!!			A DATE FOR YOUR DIARY
FEB	SAT	4th	JEC Essex Thameside Region Annual Dinner Dance Langdon Hills Golf & Country Club. Dinner dance with disco. Our annual event well worth a night out and for your partners to dress up in their 'glad rags'. Price of tickets £30. Must be paid for by Jan 3rd 2012. Contact Geoff & Mary Monk on 01277 374030 or at bmcycles@hotmail.co.uk Don't miss out on our annual get together. This is what the club is all about!
FEB	TUES	7th	Club Night at Langdon Hills Golf & Country Club @ 8pm
MAR	TUES	6th	Club Night at Langdon Hills Golf & Country Club @ 8pm
APR	TUES	3rd	Club Night at Langdon Hills Golf & Country Club @ 8pm
MAY	TUES	1st	Club Night at Langdon Hills Golf & Country Club @ 8pm
JUN	TUES	5th	Club Night at Langdon Hills Golf & Country Club @ 8pm
JUN	SUN	3rd	HAMSTREET SHOW - KENT More details to follow nearer the time
JULY	SUN	15th	ESSEX COUNTY CAR & MOTORCYCLE SHOW Cressing Temple. Details to follow nearer the time.
NATIONAL EVENTS			
FEB	SAT	18th	Interior Trim Seminar JEC Seminar @ Castle Bromwich Factory Relevant to all cars with leather seats, this seminar covers, cleaning, repairs, and refurbishment with "hands on" experience and expert tuition from Furniture Clinic. Uniquely you can take your own upholstery and even have minor repairs done on the day! You will need to provide your Trim Code or identify your trim colour and assistance can be found on the Furniture Clinic website: www.furnitureclinic.co.uk Go to JEC web site for application form; www.jec.org.uk/events.html
MAR	SAT	10th	JEC Jaguar XK8/XKR (1996 to 2005 models) Seminar @ Castle Bromwich. This seminar is applicable to those looking to buy or already own these cars. This covers model development, buying, servicing, care and maintenance and more in depth body and mechanical issues, including parts supply and modifications. Go to JEC web site for application form; www.jec.org.uk/events.html
APR	SUN	29th	LONDON TO BRIGHTON JAGUAR RUN In conjunction with JEC and Jaguar World Magazine. Details to follow nearer the time.
JUN	SAT - SUN	23rd & 24th	International Jaguar Weekend Weston Park, Shifnal, Shropshire JEC National Show. See www.jec.org.uk/events for further full details.

IN AN EFFORT TO SAVE COSTS FOR THE CLUB, IF YOU HAVE AN E-MAIL ADDRESS, PLEASE SEND IT TO THE EDITOR AT dwarren169@btinternet.com

AND ALL FUTURE
NEWSLETTERS WILL BE SENT VIA E-MAIL.
THANK YOU

NEW GAZEBO FOR THE CLUB



The committee has purchased a new gazebo for the Club for the coming season. It measures 4.5m x 3m and is built to industrial standards and thickness. We are hopeful that in all weathers it will remain upright and remain a shelter for all who attend the shows. Its first outing is likely to be at the Battlesbridge Classic Car Show on Sunday May 6th. I am pleased to report that the national club have agreed to foot the bill for the sign writing on the canvas for which we are extremely grateful. I do hope members make full use of the gazebo throughout the year. Look forward to seeing it pictured in future editions of this newsletter. *DOUG WARREN, CHAIRMAN*

ESSEX COUNTY CAR & MOTORCYCLE SHOW

We have been advised that next year's Crossing Temple *Essex County Car & Motorcycle Show* will take place on Sunday 15th July. Essex County Council have invited us back for us to display our Jaguars. I am hopeful that Jaguar Drivers Club (Area 33) will also be attending to make it a big Jaguar display as we did last year. Details will follow nearer the time and there will be no limit on club members attendance, but it has to be pre-booked in advance.



BEHIND THE SCENES AT BRITAIN'S OLDEST BREWER

Another trip being considered is a trip to Shepherd Neame Brewery in Faversham, Kent. On 19th & 20th May 2012, there is the *Faversham Transport Weekend*, so we may consider organising a joint trip. We will keep you posted.



HOW MANY MEMBERS CHECK THEIR TYRE PRESSURES?

Many people rarely check their tyre pressures. If it looks flat or low then we pump it up. It is recommended that we check the tyre pressure before every journey. Low pressure causes excessive tyre wear and fuel consumption. High pressure affects road holding, braking distance and tyre wear. Overheating – a potential blowout. *What's the answer?* Tyre Pal's TD-100A could be the answer. The TD-100A are sensors on each tyre which continuously measure the pressure and temperature of the tyres. They transmit the information wirelessly to a monitor that displays information and sounds an alarm for any abnormality. These units were for sale last May at £199.00, but recently they have been reduced to £165.00. However, the good news is that **until 5 January**, if ordered on line they are just **£99.00**. Not only that, if you quote code AEFD on check-out, there is NO post and package to pay. This is a bargain. Go to www.tyrepal.co.uk to order.



ADVERTISEMENTS



essex autogroup
Rayleigh Jaguar
Approved Service Centre



Here to meet your needs...

Jaguar Authorised Repairs
Jaguar Trained Technicians
Genuine Parts & Accessories
Warranty Repairs
All Models Serviced & Maintained



For all
enquiries call our
Jaguar Assistance Line



essexautogroup.com/jaguar | 01268 906296
a member of **essex autogroup**
Doing it even better for you

Rayleigh

Essex Auto Group 01268 906296

FOR ALL YOUR

*Jaguar servicing
& parts needs*



LOCAL | COMPETITIVE | PARTS
SKILLED JAGUAR TECHNICIANS
COLLECTION & DELIVERY
WHILE YOU WAIT SERVICE

01245 355553

Lookers formerly
DOVERCOURT

30 Robjohns Road, Widford Industrial
Estate, Chelmsford, Essex CM1 3AG

DOVERCOURTJAGUAR.COM



SPECIAL OFFER:

*Club members who are able to
show their membership cards
will be entitled to a 10%
discount on servicing and parts
from Grange Motors.*



**THE ONLY MAIN JAGUAR
DEALER IN ESSEX
ESTABLISHED 25 YEARS**

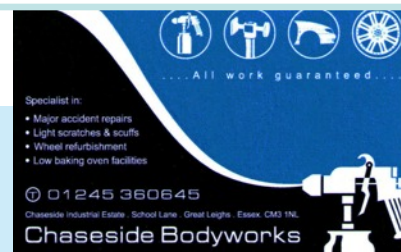
GRANGE BRENTWOOD

2 Brook Street,
Brentwood.

Tel: **01277 216 161**



www.grange.brentwood.jaguar.co.uk



Specialist in:
Major
Accident
repairs
Light

Scratches & Scuffs Wheel refurbishment
from £40+ per wheel (as featured in June
09 newsletter)
Low Baking Oven facilities

Chaseside Bodyworks
Chaseside Industrial Estate,
School Lane
Great Leighs
Essex
CM3 1NL
Call 01245 360645